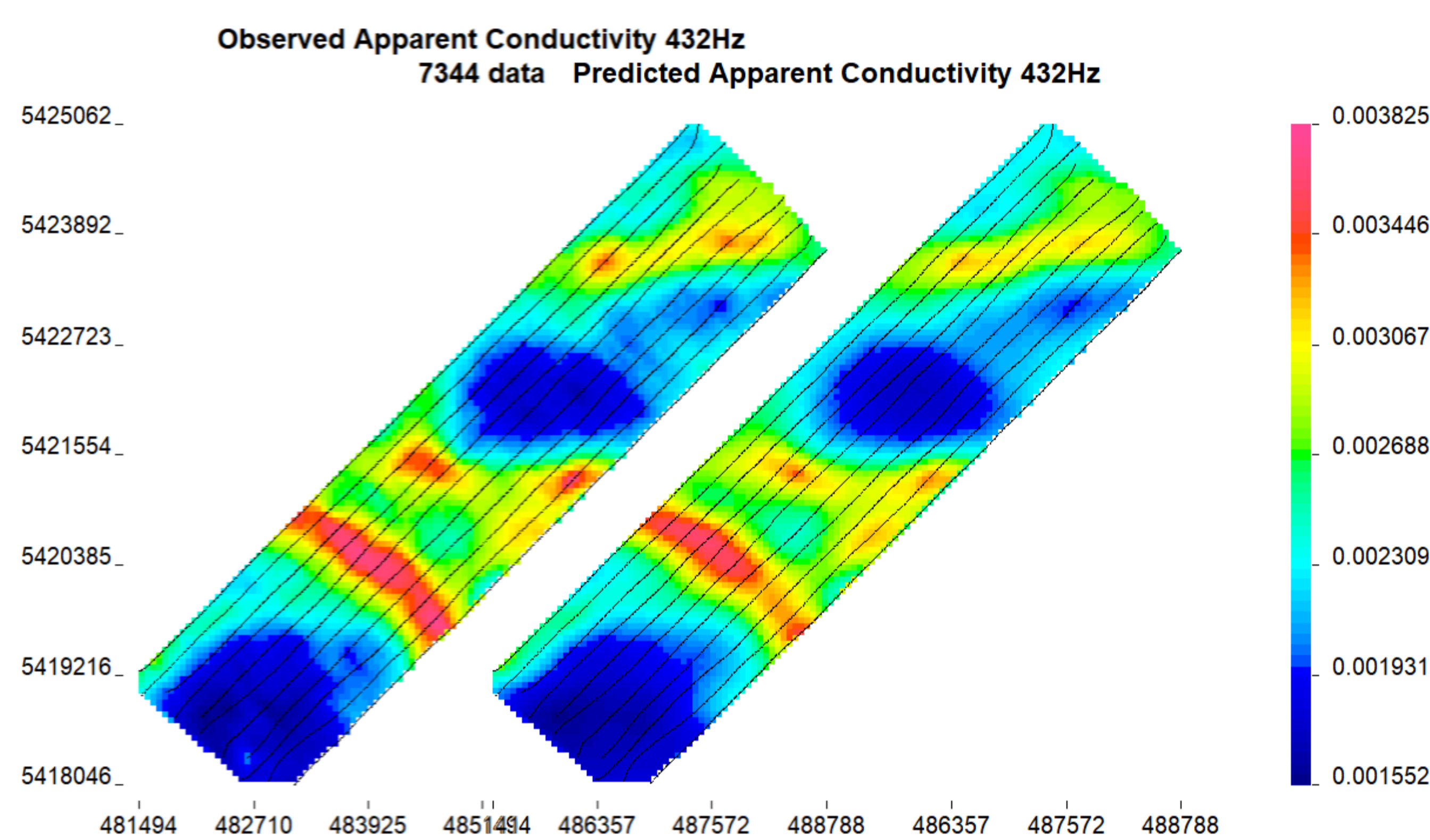


## 3D MobileMT Inversion

Computational Geosciences Inc. is pleased to offer 3D inversion of deep penetrating MobileMT data from Expert Geophysics. The inversions use CGI's proprietary OcTree inversion software that **rapidly** produce models that are **detailed** and **accurate**. The models provide the best understanding of the subsurface, containing valuable information about geologic composition and structure, and can be used for targeting discrete anomalies.



The data are presented as apparent conductivity over a broad range of frequencies (25 Hz to 30 kHz), and CGI's industry leading software is capable of inverting these data as well as all other MT and EM data types.

3D inversion accounts for topography, provides a true 3D view of the earth for interpretation, and allows for the integration of other data in 3D including joint inversions of geophysical data, and constrained inversions with physical property, geologic, and drilling data.

CGI's versatile and innovative software can be tailored to the geologic setting and exploration objective to produce models of appropriate style including focused and parametric models, along with providing data sensitivity and estimates of depth of penetration. These services, combined with CGI's extensive experience and expertise in this field get the most value from MobileMT data in a effective and cost efficient way.

Survey feasibility and design services are also available to clients of Expert Geophysics.

The MobileMT system can be use to locate tomorrow's natural resources with applications including water management, hydrocarbon and mineral exploration and production. CGI's 3D inversion allows for accurate 3D targeting and prospectivity mapping when combined with other data using CGI's leading edge machine learning techniques.

